

Client Name: Manni AVS Forums
Calibration Date: 2021-12-28

Probe: i1Display Pro OEM Target Colour Space: BT1886
Probe Cal: [1004244] i1pro2 Target EOTF: 2.400
Integration: 0.25
Intelligent Int.: True 0.1
Stabilisation: False 1
Preroll: False 0

Before Profile:

21-12-28 RS2000 1920 Hours Native-F 58 Nits

Gamut Coverage: 100%
Average EOTF: 2.216
Profile Luma Max: 57.1190
Profile Luma Min: 0.0014
Profile CR: 39823.9:1

Profile Points: 3743

dE00 Coverage

<1	44	(1.18%)
>1 <2.3	370	(9.89%)
>2.3	3329	(88.94%)

dE00 Limits

Min:	0.0060
Max:	9.5675
Avg:	4.2288

Profile Points: 3743

dE ITP Coverage

<1	1	(0.03%)
>1 <2.3	70	(1.87%)
>2.3	3672	(98.10%)

dE ITP Limits

Min:	0.4550
Max:	36.2365
Avg:	12.8891

After Profile:

21-12-28 RS2000 Envy 1K Check BT1886 1920 Hours from Native-F
58 Nits_1

Gamut Coverage: 98%
Average EOTF: 2.342
Profile Luma Max: 56.4592
Profile Luma Min: 0.0014
Profile CR: 39530.5:1

Profile Points: 1000

dE00 Coverage

<1	1000	(100.00%)
>1 <2.3	0	(0.00%)
>2.3	0	(0.00%)

dE00 Limits

Min:	0.0058
Max:	0.4402
Avg:	0.1208

Profile Points: 1000

dE ITP Coverage

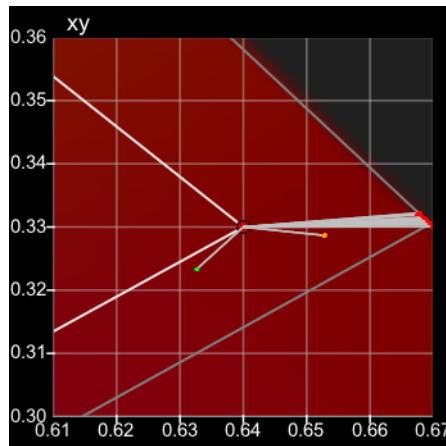
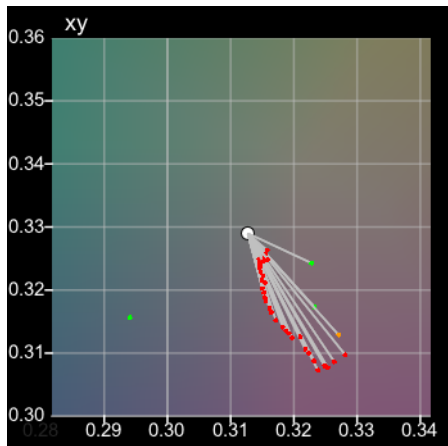
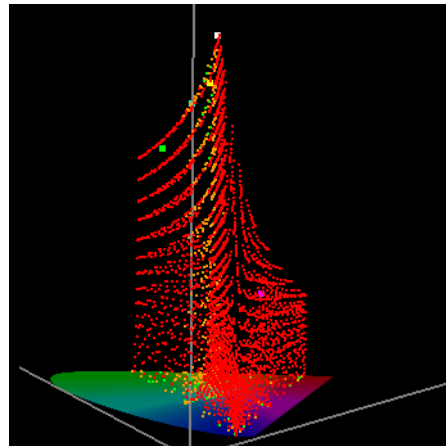
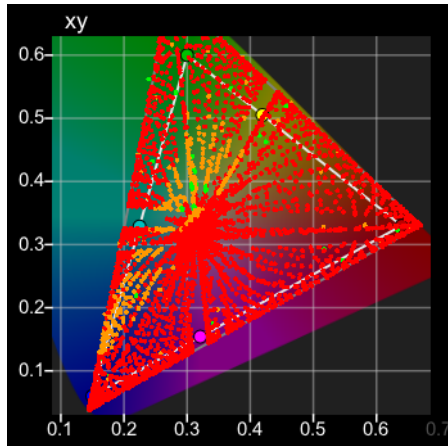
<1	974	(97.40%)
>1 <2.3	26	(2.60%)
>2.3	0	(0.00%)

dE ITP Limits

Min:	0.0199
Max:	1.9485
Avg:	0.4075

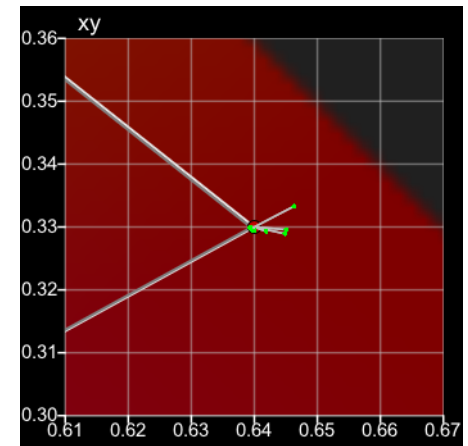
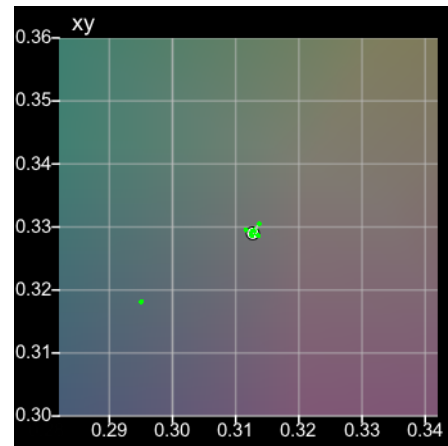
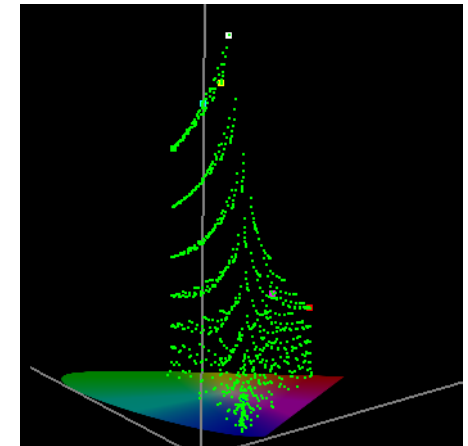
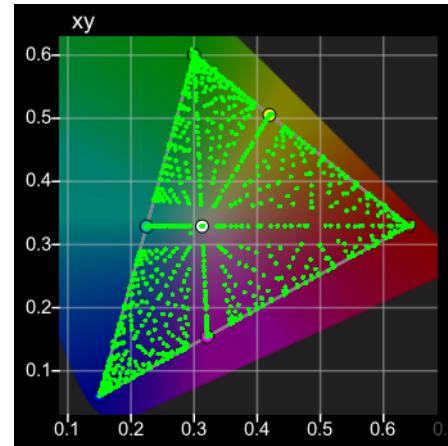
Before Profile (dE 2000):

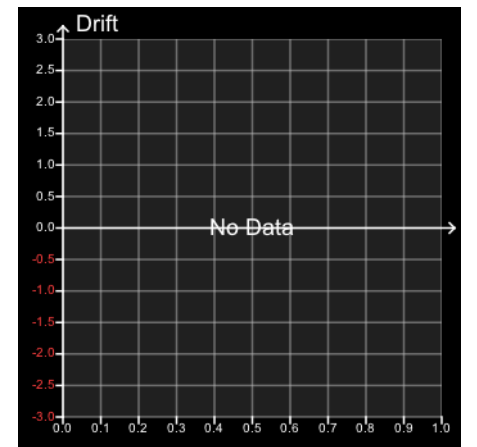
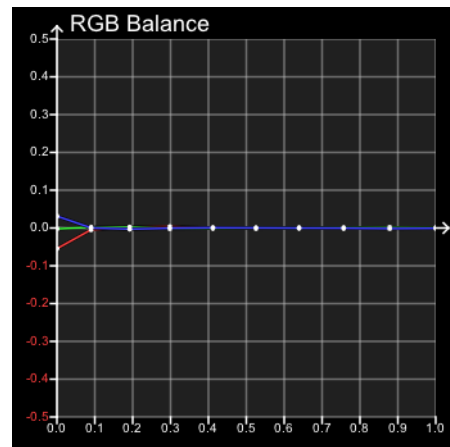
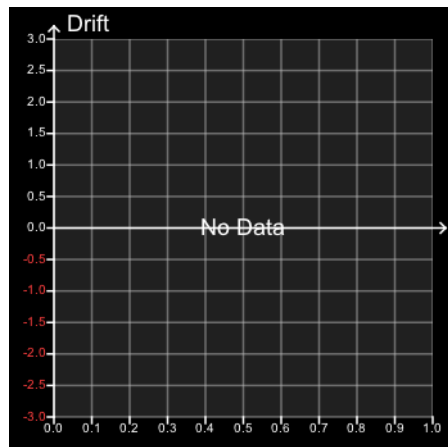
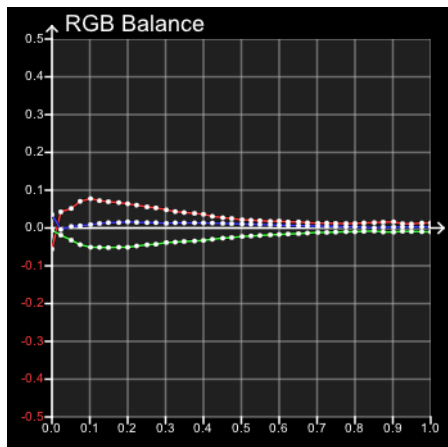
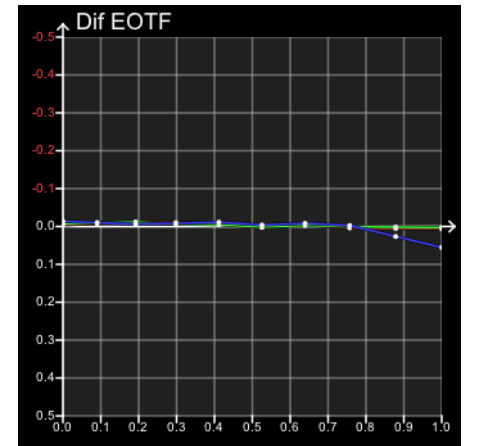
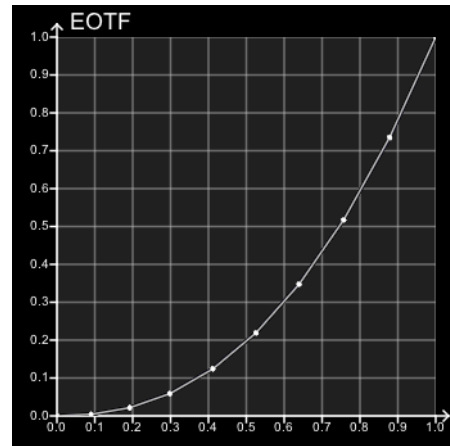
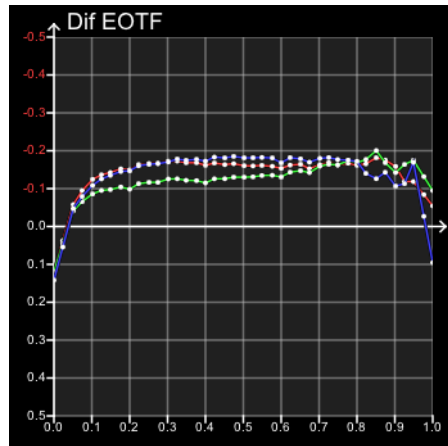
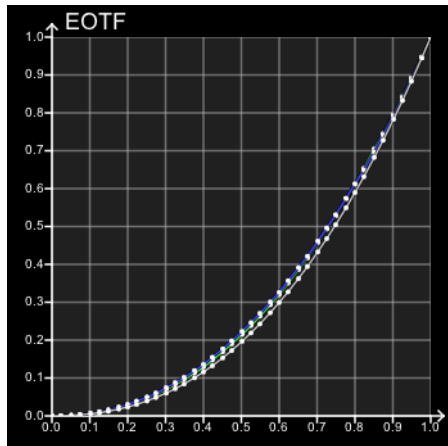
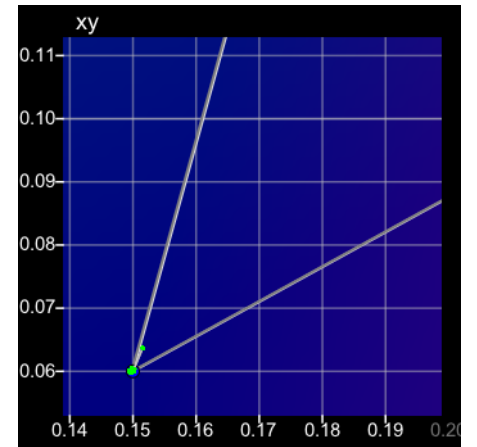
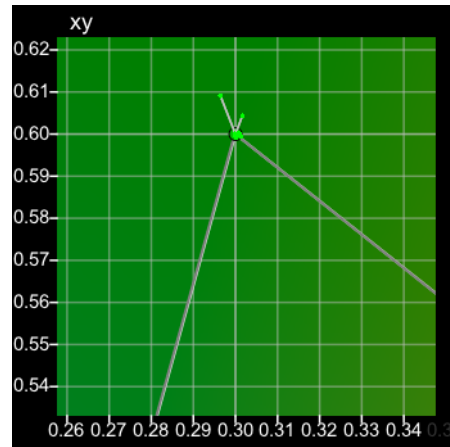
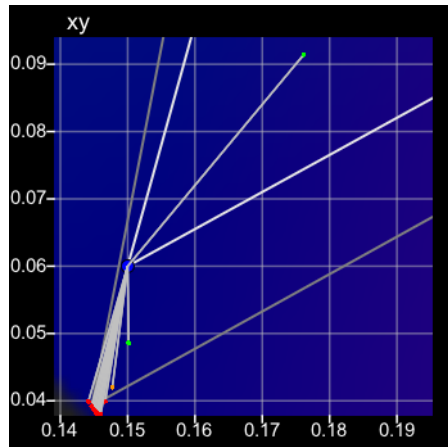
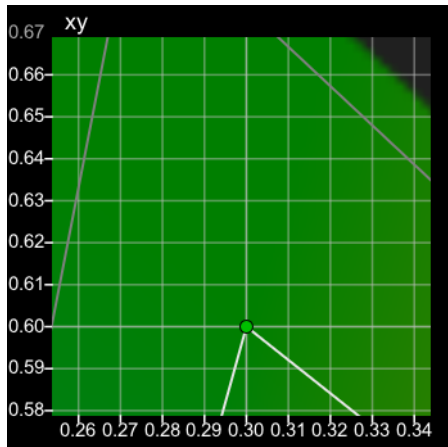
21-12-28 RS2000 1920 Hours Native-F 58 Nits



After Profile (dE 2000):

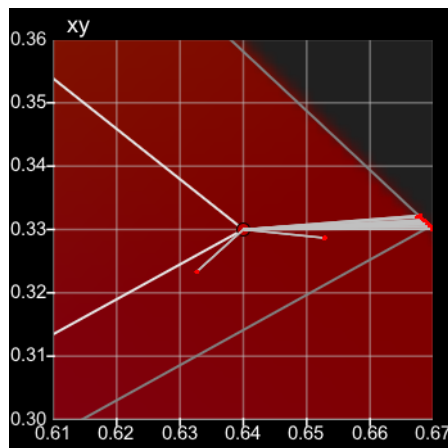
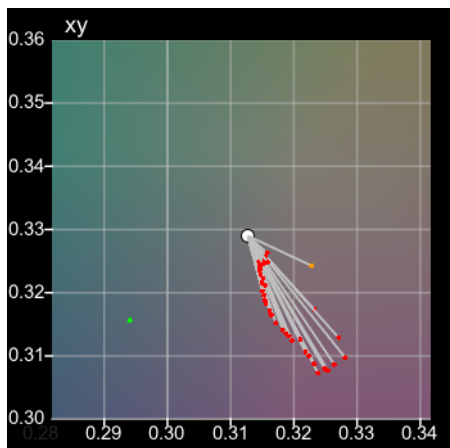
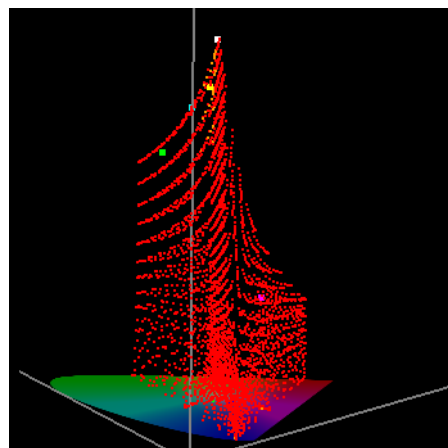
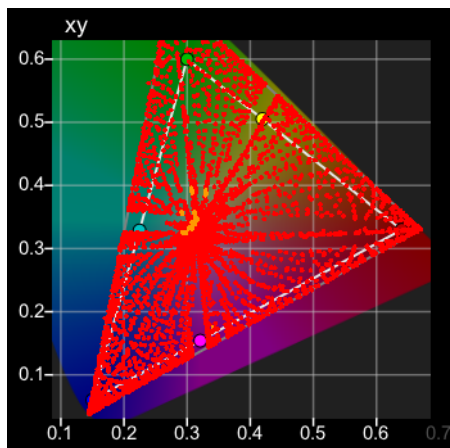
21-12-28 RS2000 EnvY 1K Check BT1886 1920 Hours from Native-F 58 Nits_1





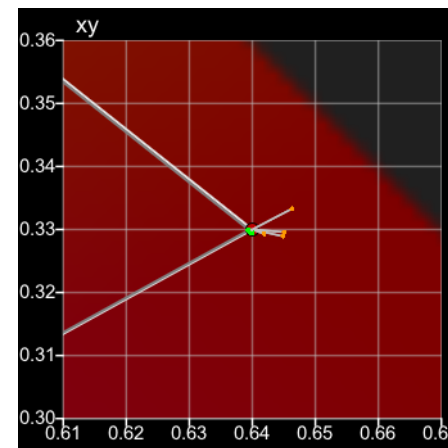
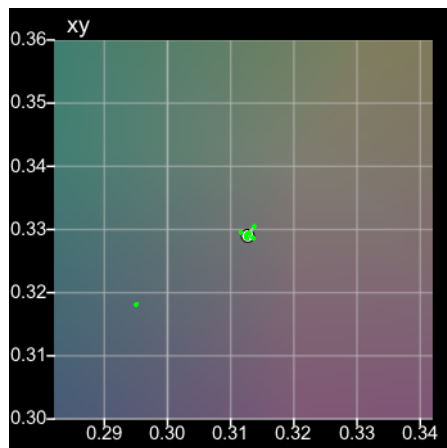
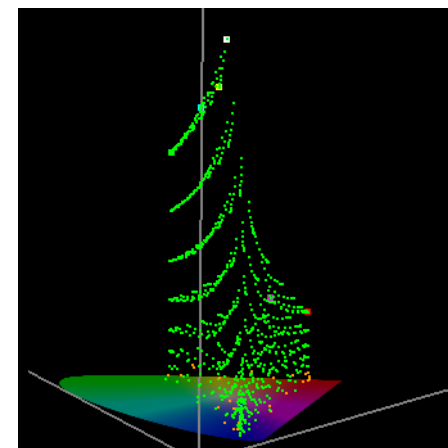
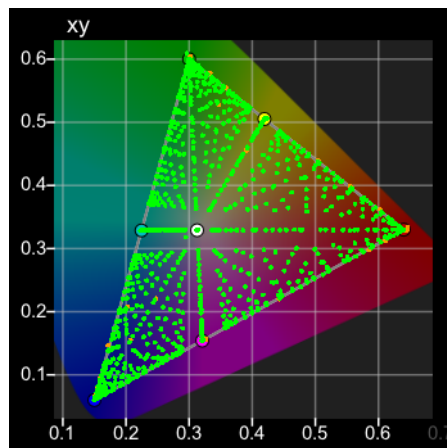
Before Profile (dE ITP):

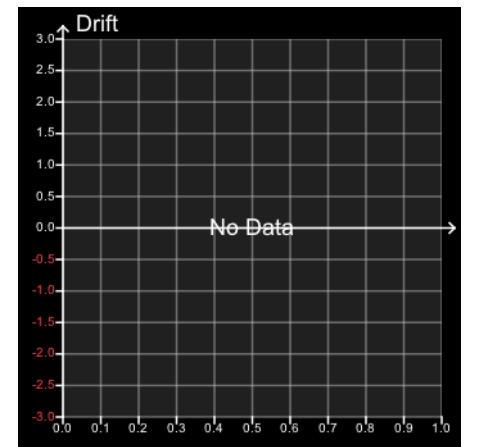
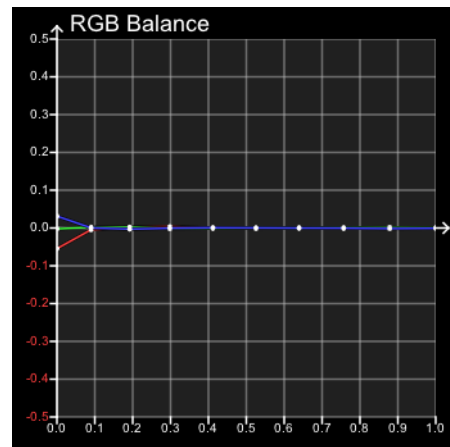
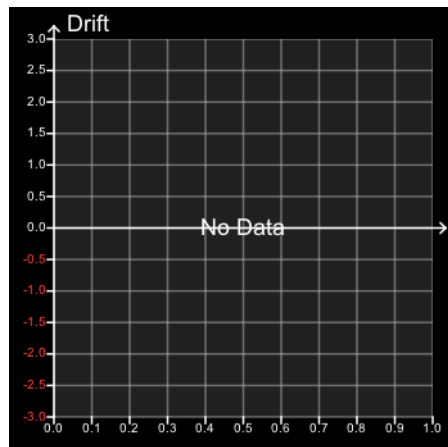
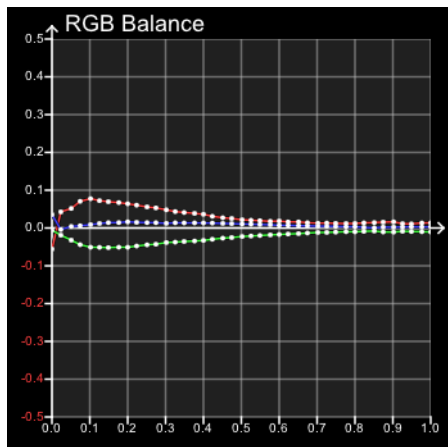
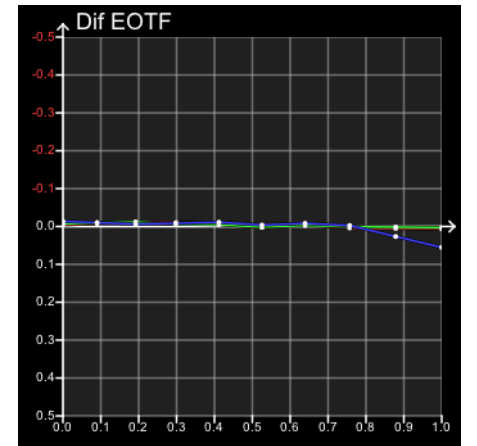
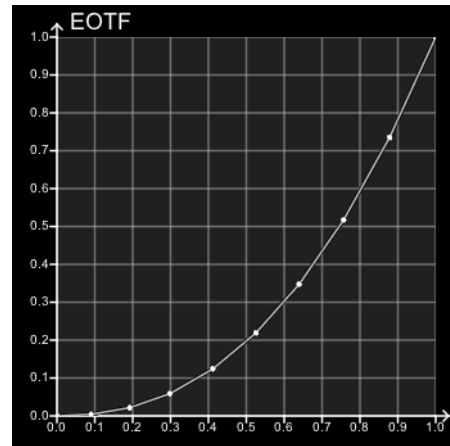
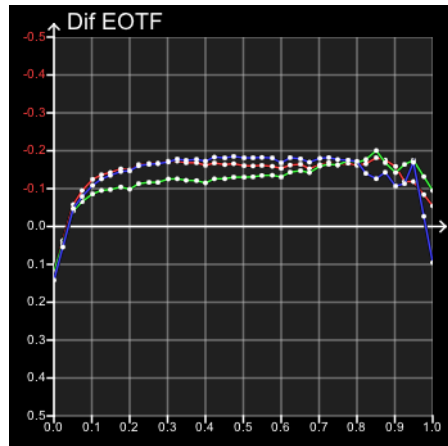
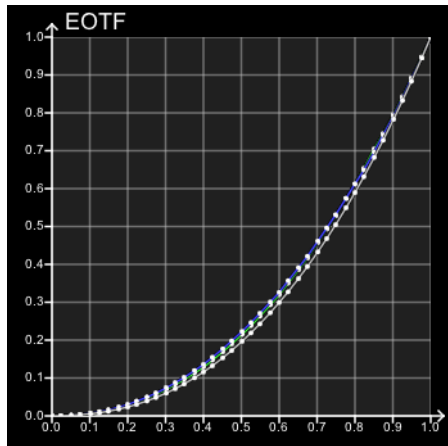
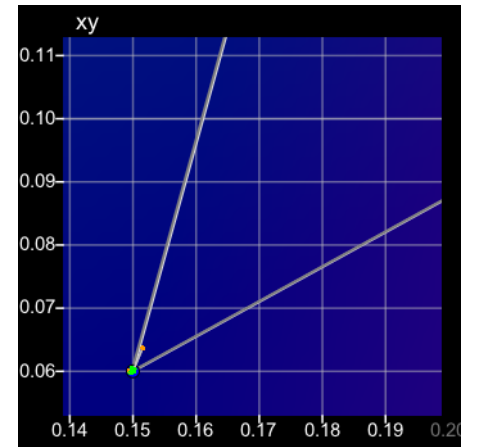
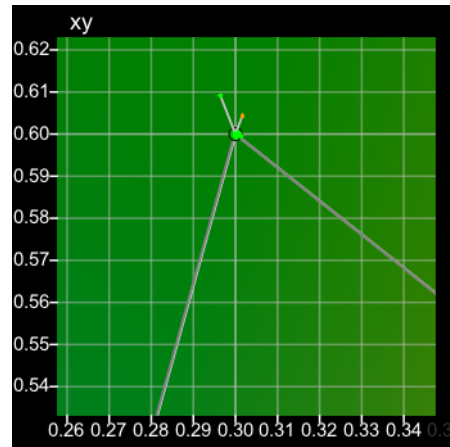
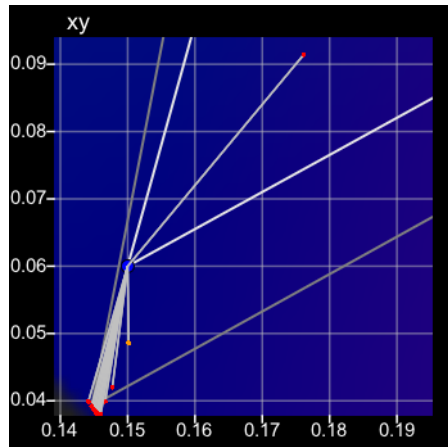
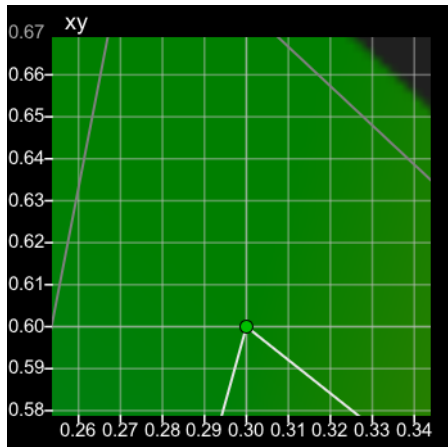
21-12-28 RS2000 1920 Hours Native-F 58 Nits



After Profile (dE ITP):

21-12-28 RS2000 EnvY 1K Check BT1886 1920 Hours from Native-F 58 Nits_1





dE Primary

dE 2000 Grey

RGB	dE 2000	dE 1976	dE ITP
0, 0, 0	0.0060	0.0056	0.4550
6, 6, 6	0.0813	0.0672	1.8227
13, 13, 13	0.6146	0.4424	3.5100
19, 19, 19	1.8622	1.3779	6.3647
26, 26, 26	4.0398	3.1508	8.8823
32, 32, 32	5.3813	4.4006	9.8947
38, 38, 38	6.0050	4.9772	10.5356
45, 45, 45	6.5545	5.5050	11.2034
51, 51, 51	7.0094	5.9276	11.2024
57, 57, 57	7.1715	6.1276	11.6408
64, 64, 64	7.2685	6.2289	11.4890
70, 70, 70	7.4243	6.3716	11.3128
77, 77, 77	7.2482	6.2145	11.0495
83, 83, 83	7.3374	6.3245	10.7259
89, 89, 89	7.3326	6.2931	10.2446
96, 96, 96	7.4392	6.3843	9.9236
102, 102, 102	7.3673	6.2923	9.3465
108, 108, 108	7.0602	6.0252	9.0123
115, 115, 115	6.7205	5.6881	8.3513
121, 121, 121	6.6183	5.5853	8.0853
128, 128, 128	6.1762	5.1935	7.4244
134, 134, 134	6.0288	5.0749	7.0911
140, 140, 140	5.8330	4.9107	6.7976
147, 147, 147	5.5815	4.6976	6.3544
153, 153, 153	5.4334	4.5120	5.9659
159, 159, 159	5.1877	4.3544	5.8030
166, 166, 166	5.0522	4.2090	5.5349
172, 172, 172	4.6481	3.8554	4.9461
179, 179, 179	4.3280	3.6197	4.7701
185, 185, 185	4.3813	3.6328	4.6366
191, 191, 191	4.2063	3.4592	4.2617

dE 2000 Grey

RGB	dE 2000	dE 1976	dE ITP
0, 0, 0	0.0058	0.0052	0.4303
23, 23, 23	0.1343	0.1186	0.6227
49, 49, 49	0.2753	0.3085	0.8116
76, 76, 76	0.3788	0.2741	0.5804
105, 105, 105	0.1664	0.1495	0.2706
134, 134, 134	0.1560	0.1077	0.1713
163, 163, 163	0.0748	0.0589	0.1058
193, 193, 193	0.2956	0.2118	0.1822
224, 224, 224	0.4075	0.3813	0.3052
255, 255, 255	0.2142	0.1967	0.1426

198, 198, 198	3.9484	3.2275	3.9990
204, 204, 204	4.0598	3.2697	3.7419
210, 210, 210	3.8957	3.0588	3.6074
217, 217, 217	3.7960	2.9479	3.5233
223, 223, 223	4.6213	3.5787	3.5608
230, 230, 230	4.8267	3.7095	3.4764
236, 236, 236	3.9332	2.9945	2.6835
242, 242, 242	4.1502	3.1994	2.6569
249, 249, 249	4.5464	3.4767	2.8861
255, 255, 255	4.8712	3.7721	3.0215

dE 2000 Red

RGB	dE 2000	dE 1976	dE ITP
6, 0, 0	0.0867	0.0773	4.8675
13, 0, 0	0.8788	0.6722	6.8426
19, 0, 0	2.2015	1.8862	12.3096
26, 0, 0	3.9876	4.0436	17.1592
51, 0, 0	5.2641	10.6804	25.5669
77, 0, 0	5.2562	12.0043	28.0712
102, 0, 0	5.1771	13.5172	28.2777
128, 0, 0	5.3771	15.4404	28.3247
153, 0, 0	5.8726	17.9962	28.6395
179, 0, 0	6.5491	21.1174	28.7592
204, 0, 0	7.5856	25.2626	29.4833
230, 0, 0	8.5411	29.5707	30.2288
255, 0, 0	8.9834	33.1353	30.5414

dE 2000 Green

RGB	dE 2000	dE 1976	dE ITP
0, 6, 0	0.1280	0.1248	3.3265
0, 13, 0	0.5015	0.4008	4.2850
0, 19, 0	1.6535	1.5243	9.3586
0, 26, 0	2.6158	2.9928	11.0179
0, 51, 0	3.8606	9.7977	17.0208
0, 77, 0	4.6462	15.7396	21.9807

dE 2000 Red

RGB	dE 2000	dE 1976	dE ITP
23, 0, 0	0.2240	0.2047	1.6936
49, 0, 0	0.3448	0.5813	1.7775
76, 0, 0	0.2144	0.5355	1.9485
105, 0, 0	0.1140	0.3335	1.0047
134, 0, 0	0.1051	0.2161	0.5060
163, 0, 0	0.1266	0.2259	0.4115
193, 0, 0	0.2251	0.4542	0.5545
224, 0, 0	0.1397	0.4184	0.4759
255, 0, 0	0.1739	0.4437	0.4979

dE 2000 Green

RGB	dE 2000	dE 1976	dE ITP
0, 23, 0	0.1265	0.1185	0.8167
0, 49, 0	0.2527	0.5231	1.1682
0, 76, 0	0.1775	0.3086	0.6669
0, 105, 0	0.1964	0.3771	0.6627
0, 134, 0	0.0363	0.1094	0.1272
0, 163, 0	0.1669	0.1955	0.4459

0, 102,	0	5.4078	22.1280	25.3462
0, 128,	0	5.9639	28.0132	28.0032
0, 153,	0	6.2871	32.9453	30.3415
0, 179,	0	6.4164	37.1527	32.3588
0, 204,	0	6.4212	40.4602	33.8471
0, 230,	0	6.3744	43.1611	35.0539
0, 255,	0	6.4032	46.0144	36.2365

0, 193,	0	0.0572	0.2096	0.2591
0, 224,	0	0.1821	0.4117	0.5154
0, 255,	0	0.0726	0.1170	0.2273

dE 2000 Blue

RGB	dE 2000	dE 1976	dE ITP
0, 0, 6	0.4901	0.4754	6.7146
0, 0, 13	0.2065	0.1845	1.5829
0, 0, 19	1.2630	1.3790	4.7162
0, 0, 26	2.5961	3.3668	7.2639
0, 0, 51	3.7823	10.1941	11.9583
0, 0, 77	4.8039	16.1919	14.1875
0, 0, 102	5.2097	20.6102	14.9358
0, 0, 128	5.5615	23.9113	15.9055
0, 0, 153	5.7362	26.1016	16.7554
0, 0, 179	5.8947	28.0232	17.7132
0, 0, 204	6.0739	29.6429	18.6396
0, 0, 230	6.2702	30.5655	19.5272
0, 0, 255	6.3050	31.1500	20.6188

dE 2000 Blue

RGB	dE 2000	dE 1976	dE ITP
0, 0, 23	0.2265	0.2640	1.0107
0, 0, 49	0.0524	0.1182	0.1666
0, 0, 76	0.0826	0.2555	0.4269
0, 0, 105	0.0808	0.2802	0.5504
0, 0, 134	0.0819	0.2168	0.8008
0, 0, 163	0.1576	0.2787	1.0324
0, 0, 193	0.1836	0.6012	0.5307
0, 0, 224	0.0442	0.0919	0.4197
0, 0, 255	0.0715	0.3237	0.5395